

# Arterial Routes – Achieving a consistent approach to their maintenance and development

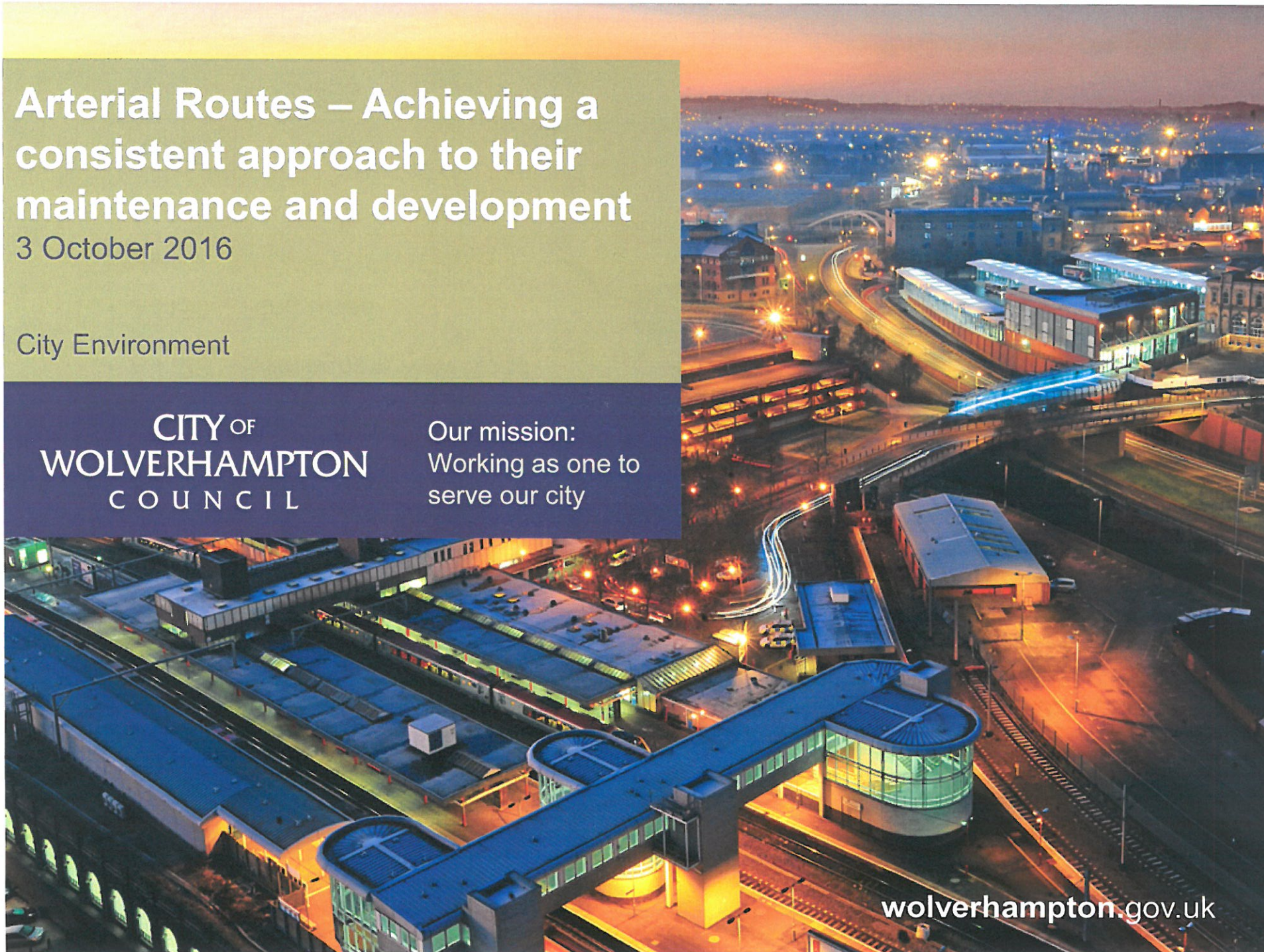
3 October 2016

City Environment

CITY OF  
WOLVERHAMPTON  
COUNCIL

Our mission:  
Working as one to  
serve our city

[wolverhampton.gov.uk](http://wolverhampton.gov.uk)





# Key Route Network

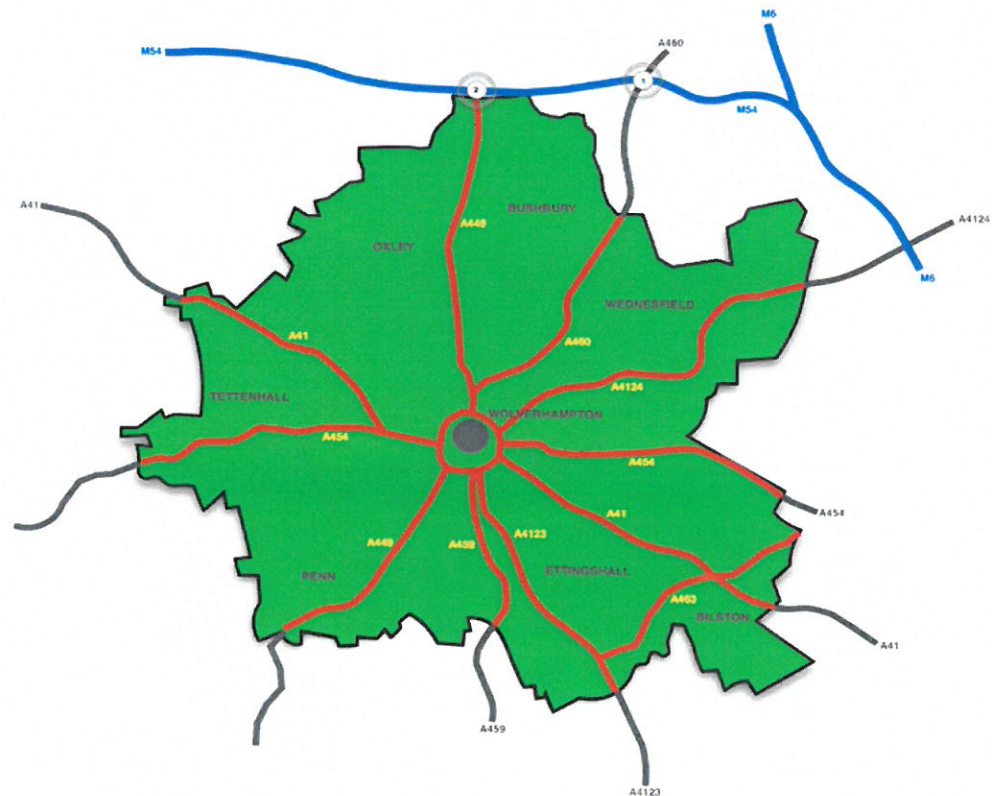
The Key Route Network (KRN) was developed from the arterial routes and identifies the strategically important routes for business and commuting within Wolverhampton. It has been highlighted that due to the inconsistencies in the maintenance and development of this critical network, improvements are needed to achieve a more consistent approach.

## Main Arterial Routes

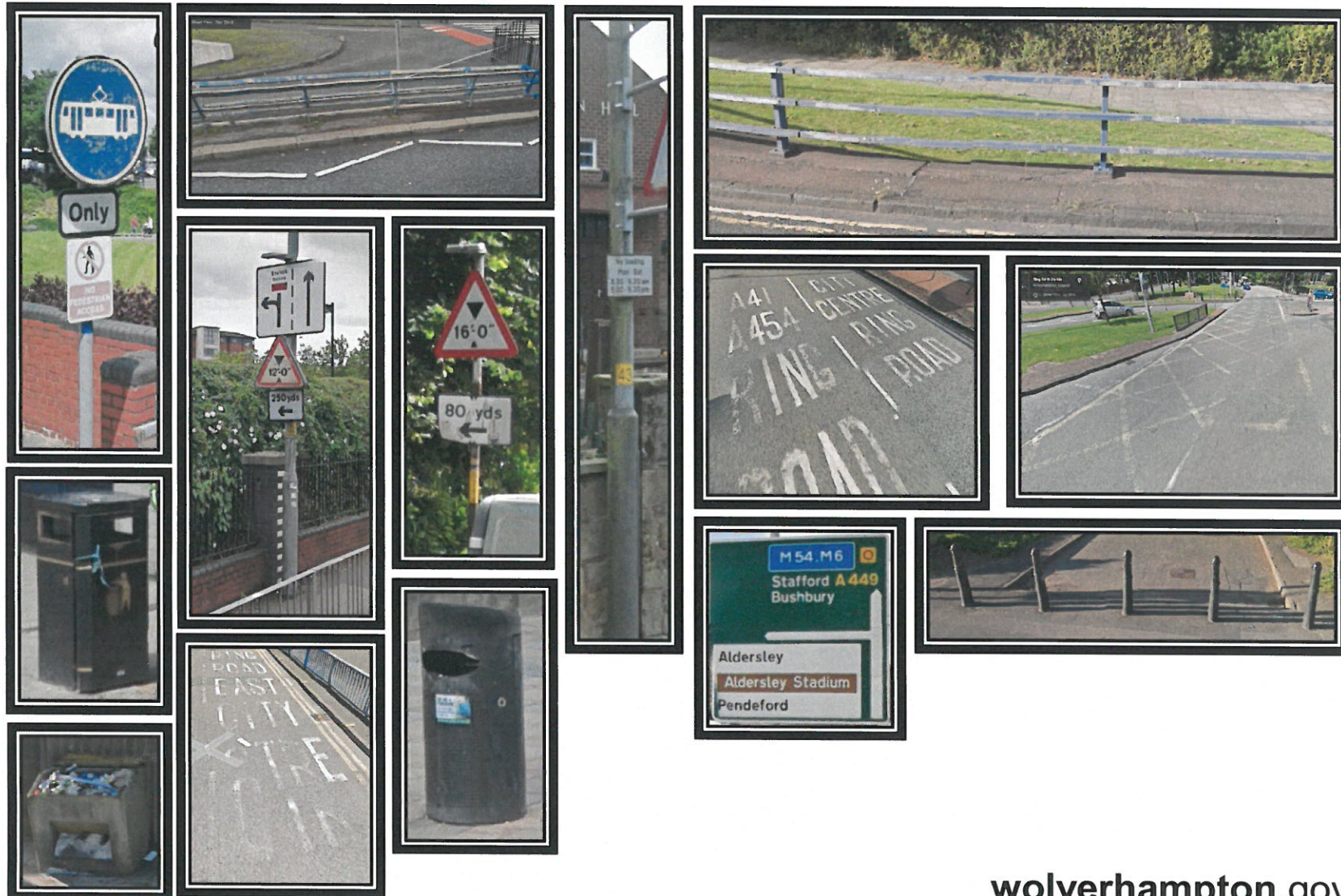
- A449 – Stafford Road
- A454 – Willenhall Road
- A4123 – Birmingham New Road
- A4150 – Ring Road

## Other Arterial Routes

- |        |        |         |
|--------|--------|---------|
| • A41  | • A459 | • A4124 |
| • A449 | • A460 |         |
| • A454 | • A463 |         |



# Current issues





# Achieving a consistent approach (1)

- Faded road markings
  - Repaint faded markings on all arterial routes
- Guard rail
  - Safety audit of guard rail
  - Remove, replace or repaint
- Signs – Directional signage, regulatory signage, street name plates
  - Identify worn out, obsolete and signs with incorrect information for replacement programme
  - Co-ordinate sign cleaning operations
- Greenery – Vegetation, trees, grassed areas, planters etc.
  - Cut back\remove overgrown vegetation, remove redundant planters and repair verges
  - Plant additional trees
- Street lighting columns and luminaires
  - Clean and repaint as necessary
- Traffic signals and pedestrian crossings
  - Clean, repaint and carry out minor repairs

# Achieving a consistent approach (2)

- Bollards – Protective
  - Remove, repair, replace or repaint bollards
- Bollards – Regulatory
  - Remove illuminated bollards and replace with non illuminated - ongoing programme

## Annual Maintenance

- Carriageway and footway resurfacing
  - Annual programme of schemes – review programme for 2017\18

## Regular maintenance

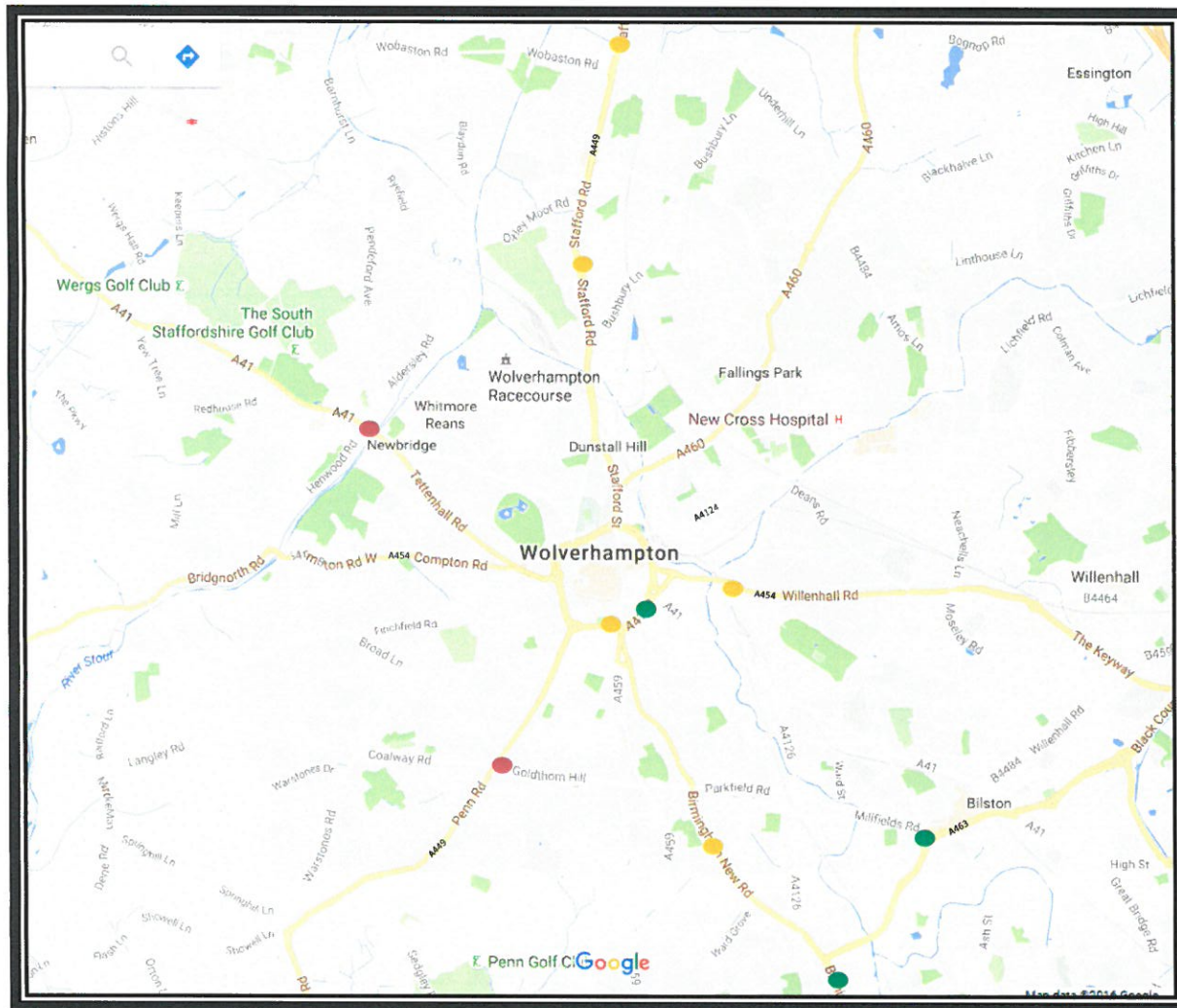
- Street cleansing – Mechanically swept, fortnightly
- Clean \ Litter – Manual, fortnightly
- Grass cutting – Monthly
- Bins emptied – Weekly
- Gulley emptying – Annual, more frequent in sensitive locations
- Sign cleaning – Six monthly, more frequent in heavily trafficked areas (e.g. BCR, Willenhall Road)



# What should we be aiming for?



# Capital improvement schemes



## Key

- Current schemes
- Schemes ready to go or partly funded
- No current scheme



# Current and future schemes

LOCATION	SCHEME	START	FINISH	
A463 Black Country Route	Coseley Rd roundabout improvement	Feb 2016	Nov 2016	G
A4123 Birmingham New Road	Shaw Road junction improvement	Aug 2016	May 2017	G
A4150 Ring Road	Cycle routes	Aug 2016	Jan 2017	G
A449 Stafford Rd	Widening M54 J2 to Springfield Lane	April 2017	Sept 2018	A
A4150 Ring Road St John's	Widening to three lanes	June 2017	Oct 2017	A
A449 Stafford Road	Corridor approach. Feasibility/modelling underway. Possible junction improvements. Parking restrictions?	2018	2026	A
A454 Willenhall Road	Corridor approach. Feasibility/modelling underway. Possible gyratory, dualling, Neachells Lane junction improvement.	2017	2022	A
A4123 Birmingham New Road	Corridor approach. Junction improvements/right turn movements. Cycle route design underway.	2017	2022	A
A41 Tettenhall Road	Junction improvement, The Rock	TBA	TBA	R
A449 Penn Road	Widen to dual carriageway	TBA	TBA	R